



Espresso coffee grinder  
# 40A

Espresso grinder  
**SILENCE**



# 40A  
(Grey model)

Internationally patented models



# Silent espresso

Long life, design and silence...

Fresh ground coffee gives the best espresso served in bars, hotels, restaurants. This table top machine sits beside a 1, 2 or 3 group traditional espresso coffee machine.



# Coffee grinder #40A

Coffee since 1954



The European experience of SANTOS on its local espresso market is the warranty of the best results in terms of quality of grinding. Since 1954, we manufacture our own grinding disks.

The "silence" grinder gives the best :

- Constant and fine grinding
- Constant portion dispensed
- Large hopper
- Easy to adjust (grinding and dosing)
- No "burn coffee" effect while grinding
- Easy to maintain (changing the grinding disks is very easy)
- A commercial reliable tool (aluminum casting and asynchronous motor)
- Very silent (63 dBA)

Silence: 63dBA

"3 times more silent than the other grinders", that was achieved by our design department - "Silentbloc" mounted motor, rubber gasket.. The noise level is very low.

For silence :

- Hopper gasket
- Head gasket
- Coffee outlet gasket
- "silentblocs" mounted motor

For performance :

- You can adjust the plate after changing the grinding disks
- Screw for adjusting the grinding, but also dissipating heat (no "burn coffee" effect)
- SANTOS grinding disks  $\varnothing 63.5$  mm. heat treatment, long life, easy to change by 3 screws
- Grinding body
- Commercial asynchronous motor  
220-240V 50/60Hz - 360W  
100-120V 50/60Hz - 310W

For maintenance :

All the electrical components are on one plate. No need to disassemble the machine to repair.

- Over-current protection

Silence SANTOS patent

PRODUCT : 2-YEAR WARRANTY



High precision portion dispenser

www.santos.fr



One action on the handle gives a precise dose for one espresso :

The portion dispenser has been studied to achieve a dose to dose regularity : smooth surfaces, strong aluminium handle with precise mechanism...



# 40A (Grey model)

The coffee dose dispensed can be easily adjusted from 6.5 to 9 grams, turning the button.

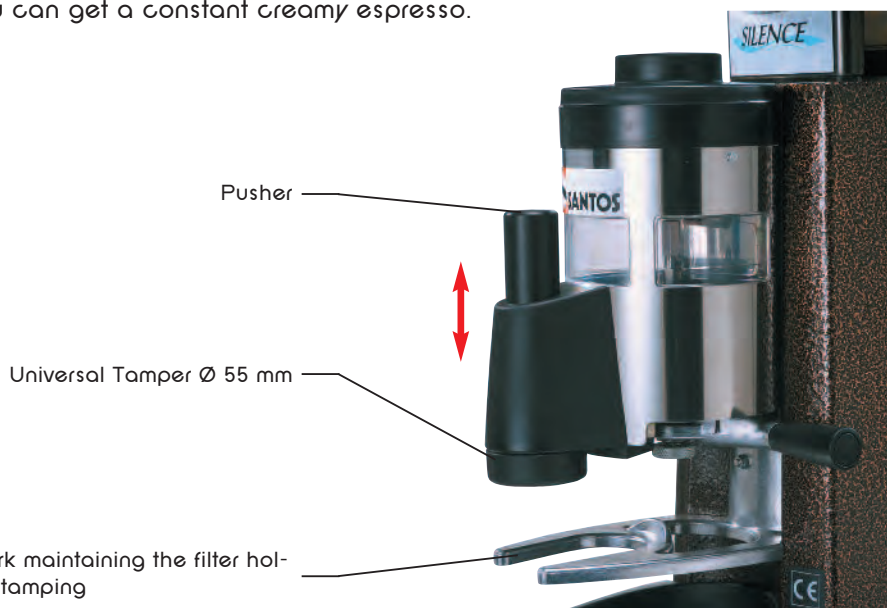
The amount of coffee in the portion dispenser is constant, refilled automatically after dispensing (automatism starts and stops the motor).

This amount of coffee is :

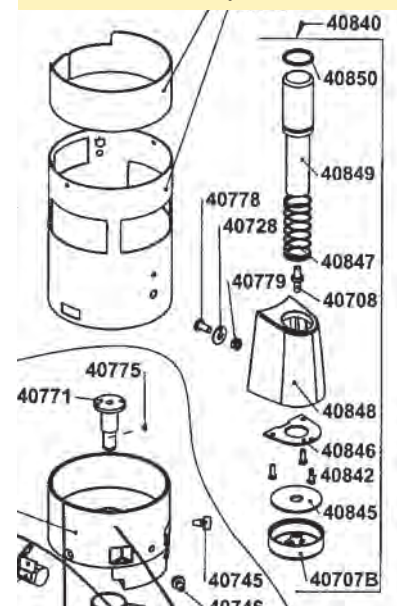
- Low enough to keep fresh ground coffee (grind on demand coffee gives the best quality espresso)
- High enough to serve as many espresso per hour that you need, even at rush hour.

Option : With mobile coffee tamper #40A PPM

The mobile coffee tamper gives a more regular tamping with an easier movement. Then you can get a constant creamy espresso.



# 40A PPM exploded view



# Coffee grinder #40A

Gamme de coloris



www.santos.fr

## 3 Santos standard colors



Black



Grey



Brown

## Other colors on demand



Red



Blue



Green



Chromed

## Technical specifications

### Motor

Single phase	110-120V - 50/60 Hz- 310 W - <b>UL, CE</b> 220-240V - 50/60 Hz- 360 W - <b>CE</b>
Speed	1 500 rpm (50 Hz) 1 800 rpm (60 Hz)
Average output	8 kg/hour

### Weight

Net	14 Kg (30 lbs)
Shipping	16 Kg (35 lbs)

### Dimensions

	Appliance	Shipping (box)
Height	580 mm (23")	660 mm (26")
Width	190 mm (8")	250 mm (10")
Depth	390 mm (16")	450 mm (18")
Shipping cube		0.074 m <sup>3</sup>



TO GRIND THINER : Screw the 40202 screw. Screwing can also compensate the long term wearing of the grinding disks.

TO CHANGE THE GRINDING DISKS : Unscrew 40202 and change the 2 grinding disks, after cleaning all surfaces and threads. Then re-adjust plate 40207.

TO RE-AJUST THE PLATE 40207 : Unscrew the 4 screws, get the 2 disks just touching each other by screwing 40202 screw, put the Zero of the plate in front of the index, then re-screw the 4 screws.

TO ADJUST THE DOSE DISPENSED : Unscrew the button 40774 to higher the dose - screw to lower the dose.

## Safety - Standards - Hygiene

In accordance with the following regulations:

- Machinery directive 2006/42/EC
- Electromagnetic compatibility 2004/108/EC
- "Low voltage" directive 2006/95/EC
- Regulation 1935/2004/EC (contact with food)

- RoHS directive 2002/95/EC
- Harmonized European standards  
NF EN ISO 12100 - 1 and 2 : 2004 ; NF EN 60204 - 1 : 2006
- CE European standards, UL (USA) et cUL (Canada)

### Electrical safety

- On/Off interlock switch is waterproof
- All mechanical parts are ground (earth) connected
- All equipment is perfectly controlled after assembly (special electrical testing bay)

### Acoustic safety

The asynchronous motor particularly silent is fitted on silentbloc

### Hygiene

All removable parts can be put in a dishwasher or easily cleaned with hot soapy water

### Thermal safety

Motor protected by internal thermal detector and overload protector

# Silent espresso coffe grinder #40A

