

**COFFEE GRINDER #01 BAR**



Internationally  
patented models





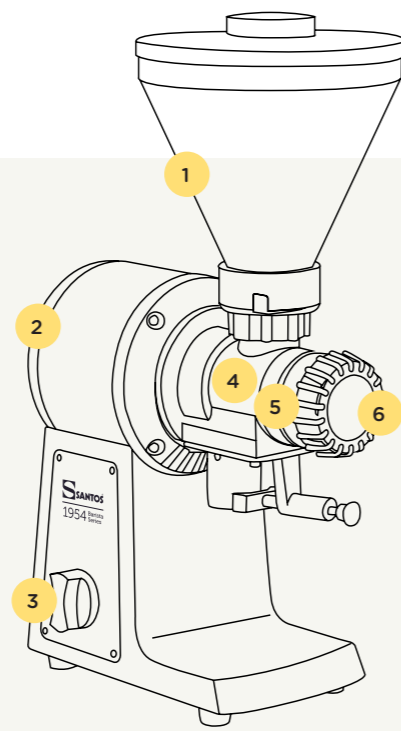
# A special barista coffee grinder

This special edition dedicated to baristas is based on the traditional coffee grinder from 1954.

This edition has a unique design and high-quality features for a premium coffee.

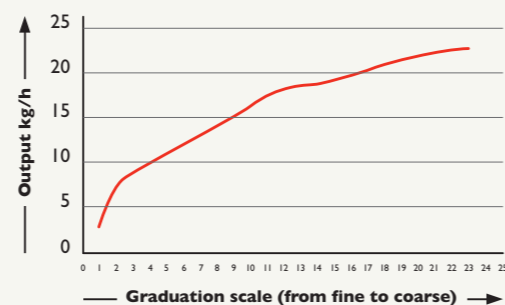
It can grind small amounts of coffee thanks to its 1 kg (2.2 lbs) hopper, ideal for specialty coffee.

It offers a precise micrometric setting for all types of filtrations: espresso, filter, French press...



- 1 1 kg (2.2lbs) hopper
- 2 Powerful and reliable commercial motor
- 3 On / Off and pulse button
- 4 ø 63,5 mm (2.5") grinding discs: high resistance, long lasting
- 5 Horizontal feeding screw
- 6 Micrometric adjustment  
Extremely precise: from very fine to extra coarse

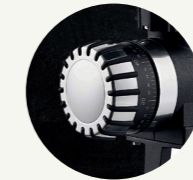
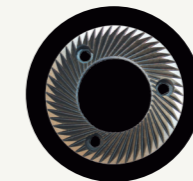
## Output of the coffee grinder #01 BAR



65 YEARS  
experience

### Santos know-how

- Since 1954, Santos manufactures its own grinding discs for a high quality grinding
- Specialist of silent grinders
- Dose regularity
- Not burning coffee while grinding
- Anti-static system
- Easy adjustment and maintenance



## Precision and quality

**Exclusive santos ø 63,5 mm grinding discs**  
Santos manufactures its own grinding discs since 1954 to ensure a high-quality grinding — Homogeneous and constant grinding

**Direct dispensing of coffee**  
Ergonomic coffee grinder spout — No coffee retention

**Micrometric adjustment**  
Precise micrometric scale to adjust the grinding size: espresso, filter, French press

## Safety, standards, Hygiene

**In accordance with the following regulations**

- Machinery directive 2006/42/EC
- Electromagnetic compatibility 2014/30/EU
- “Low voltage” directive 2014/35/EU
- RoHS directive 2011/65/EU
- Regulation 1935/2004/EC (contact with food)
- Regulation 10/2011/EU (plastic in contact with food)

**Harmonized European Standards**

- EN ISO 12100: 2010
- EN 60204-1: 2018
- EN 60335-2-64: 2004 Commercial electric kitchen machines
- CE Marking

**Thermal safety** Motor protected by internal thermal detector

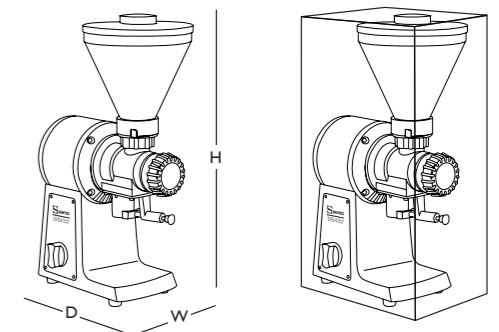
**Acoustic safety** Very silent and powerful asynchronous motor

**Hygiene** All removable parts can be put in a dishwasher or easlily cleaned with hot soapy water

## Technical specifications

**Motor**  
Single phase:  
220-240 V – 50/60 Hz – 600 W – CE  
100-120 V – 50/60 Hz – 650 W – CE

Speed:  
1500 rpm (50 Hz)  
1800 rpm (60 Hz)



**Appliance**  
D: 330 mm (13")  
W: 190 mm (7")  
H: 560 mm (22")  
Net weight:  
14,5 Kg (31 lbs)

**Shipping box**  
D: 410 mm (16")  
W: 300 mm (12")  
H: 575 mm (23")  
Packed weight:  
15,5 Kg (33 lbs)

**PRODUCT: 2 YEAR WARRANTY | MOTOR: 5 YEARS**



